

PART OF THE S.1/2, OF SECTION 6, T.6N., R.2E., S.L.B. & M.

185

# SKY RANCH 1ST AMENDMENT

IN WEBER COUNTY

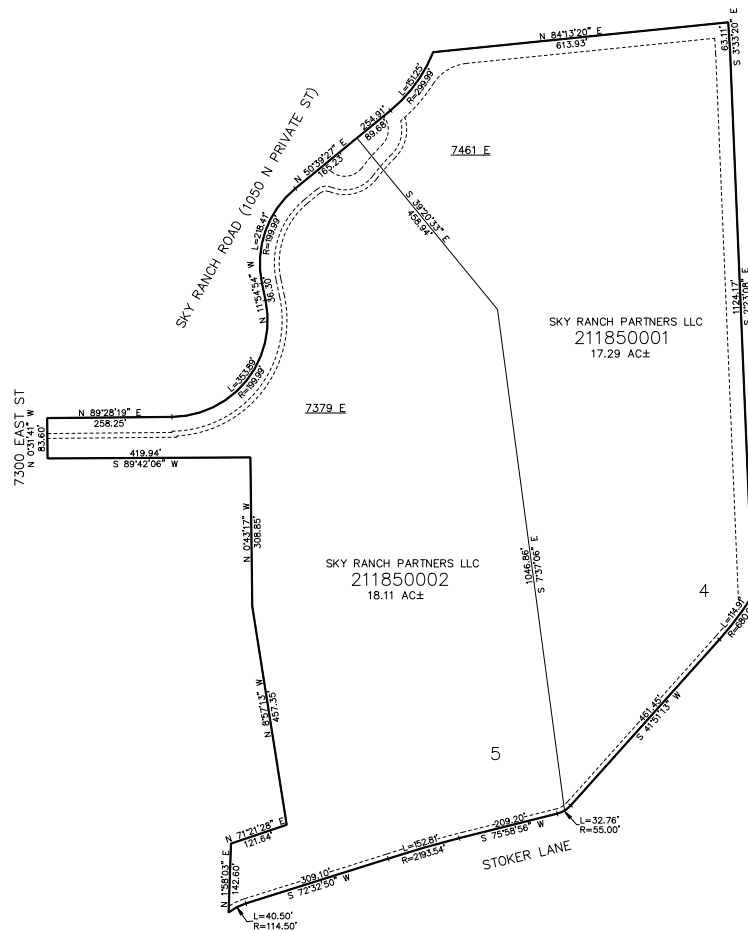
SCALE 1" = 200'

TAXING UNIT: 520

SEE PAGE 172

SEE PAGE 172

SEE PAGE 172



10' UTILITY & DRAINAGE EASEMENTS EACH  
SIDE OF PROPERTY LINES AS INDICATED  
BY DASHED LINES EXCEPT AS OTHERWISE  
SHOWN.

SEE PAGE 172

FOR COMPLETE SURVEY DATA SEE  
ORIGINAL DEDICATION PLAT IN  
BOOK 98, PAGE 25 & 26 OF RECORDS.